

Sinar eXposure™ 7.0.3 ReadMe

1. Purpose of Use

Sinar eXposure™ is a state-of-the-art application for capturing, processing and exporting images with Sinar digital camera backs. The key benefits of this newly designed application are:

- Modern architecture with consistent support for multi-processor systems
- Intuitive software user interface which can be customized to individual needs
- Support for multiple monitors
- Completely ICC-based workflow
- Optionally, an individual color calibration for digital backs can be performed
- No proprietary RAW data format: the raw data is stored as DNG
- DNG allows for processing the raw data in third-party software packages (e.g., Adobe Lightroom, etc.)
- Sinar CaptureShop 5.x RAW-files (.sti) are supported as of Sinar eXposure™ Version 7.0.1. See also 5.

Currently, the following back types are supported:

- Sinarback eMotion 75 and 75 LV
- Sinarback eMotion 54 LV
- Sinarback eMotion 22
- Sinarback eSprit 65 LV
- Sinar Hy6 65 camera system
- Sinarback eVolution 75 H[†]
- Sinarback 54 M/MC

[†] **Note:** in order to operate the Sinarback eVolution 75 H with Sinar eXposure™ 7.0.3 the Sinarback eVolution Firmware version 2.30 **is required**. The Sinarback eVolution Firmware Updater 2.30 is available for download from the Sinar website www.sinar.ch

2. System Requirements

Sinar eXposure™ version 7.0.3 supports Apple Macintosh™ computers with both PowerPC (G4/G5) and Intel® processors with Mac OS 10.5.8, 10.6.2 and higher.

Minimum System Requirements

Processor:	G5 Processor with 1.5 GHz
Physical RAM:	2 GB
Hard disk space:	3 GB + space for capturing images
Mac OS:	10.5.8 or higher

Recommended System Configuration

Depending on the pixel count of the digital back in use

Processor:	Dual core processor with 2 GHz or faster
Physical RAM:	4 GB or more
Hard disk space:	20 GB + space for capturing images
Mac OS:	10.5.8 or higher

3. Installation

To install the Sinar eXposure™ software, double-click the file "Sinar eXposure 7.0.3(263).dmg". A finder window with the file "Sinar eXposure 7.0.3.mpkg" opens automatically. To install the software, double-click this file and follow the instructions on the screen.

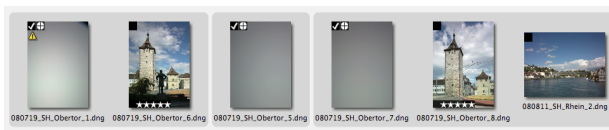
After the successful installation, close the installation program by clicking the button "Close". The Sinar eXposure™ software is stored in the directory "Applications". An alias of the application is automatically added to the dock items.

4. Shading Mode

The Sinar eXposure™ 7.0.3 includes a unique **Shading Mode** specifically designed for architectural photography with the new **Sinar arTec camera system**. Thanks to the Shading Mode, photographers can now capture images and create shading files for each individual capturing situation completely mobile. Back in the studio, the shading files can efficiently be applied to the respective images in batch mode.

A shading is created using the Shading diffusor. The shadings have to be created under the same light conditions as the capture. They are saved in the image folder and are loaded and displayed with the images in the Contact sheet.

To activate the shading mode, first of all, the respective icon has to be placed to the toolbar. After activating the shading mode, each image in the contact sheet shows a black check box. To select a file as a shading mark this check box. The selected shading will be applied to the subsequent images until another file is selected as shading. A gray frame marks the images to which the specific shading will be applied.



The shading intensity is selected by marking the pie chart in the upper left corner of the thumbnail. The proportions of the pie chart are visible correspond to the intensity of the brightness correction (0%, 25%, 50%, 75% or 100%). The color correction intensity is always 100%.

In order to create new DNG raw files with the associated shadings applied the user can select the images in the contact sheet and drag them to the destination folder in the browser. He can also have the associated shadings

applied on the fly while exporting the images in TIFF or JPEG format.

5. Processing of Images from Eyelike Capture Pro and Sinar CaptureShop™

Basically Sinar eXposure™ is able to read images that have been captured with Eyelike Capture Pro. Images captured with Sinar CaptureShop™ 5.x (Sinar Tagged Image, ".sti" raw data) are supported as of Sinar eXposure™ version 7.0.3. Multishot Images are openend, displayed and exported only as 1-shot images.

Changes to the image parameters that are made using Sinar eXposure™ to images captured with these two applications are not saved in the original raw data, therefore any possible damage of the original raw data is prevented.

By dragging images originally captured with Eyelike Capture Pro into a different folder, the original raw data is converted into DNG and saved as copies to the target folder.

6. Compatibility of the Sinar eXposure™ Raw Data with Applications of Third-party Suppliers

Images that are created using Sinar eXposure™ are saved as DNG-files. In principle it is possible to process these images with software packages of third party suppliers that are able to interpret DNG-data. However, it has to be considered that not every application capable of interpreting DNG-data can necessarily read and process the Sinar eXposure™ raw data correctly as well.

Sinar eXposure™ permits the categorization of the images using star symbols (the more stars it has, the more important is the image). This categorization and the meta data stored in the raw data can be interpreted and displayed by software packages of third party suppliers.

7. Version Log Sinar eXposure™

Improvements with eXposure 7.0.3 (compared to 7.0.1)

- a. The Sinarback 54 M/MC is now fully supported. The issue when installing the CCD files from the CD for the Sinarback 54 M/MC has been resolved.
- b. The following MF cameras are supported when using the Sinarback eSprit 65LV tethered with Firmware Version 1.041:
 - Hasselblad V System
 - Hasselblad H System
 For further information, details and restrictions for these cameras, please consult the ReadMe file of the Sinarback eSprit Firmware 1.041.
- c. Various minor bugs have been fixed

Improvements with eXposure 7.0.1 (compared to 6.2)

- a. The reason for the kernel panics that happened on some models of the Apple Macintosh computers has been eliminated.
- b. STI files created by Sinar CaptureShop™ 5.x are now correctly read and displayed.
- c. DNG-files produced on a Sinarback eSprit 65 can now also be read directly from the CF card.
- d. Besides of the currently available profile for Flashlight, now also profiles for Tungsten- and Daylight are available when working with one of the Sinarbacks that are supported by Sinar eXposure™ (Sinarback eVolution 75 H, Sinarback eMotion 75/54 LV, Sinarback eSprit 65 LV, and Sinarback 54 M/MC).
- e. The asymmetrical swing/tilt axes of a Sinar p3/p2/p view camera are displayed in the Live image window.
- f. In the Contact sheet, images captured in the 4-shot mode are marked accordingly.
- g. When working with a Sinarback eVolution 75 H or a Sinarback 54 M/MC the USB-Lens Interface by Schneider Kreuznach can be controlled from the user interface of Sinar eXposure™. The shutter can be triggered direct from Sinar eXposure. Aperture and exposuretime has to be set from the Schneider Lens Control Software.
- h. When browsing over an image with the "Pipette" tool, the RGB-values are displayed beneath the pipette icon.
- i. There are several skins available for the GUI.

8. Known Bugs

- When operating Sinar eXposure 7.0.3 on Apple MacBook Pro (latest models with unibody housing) or iMac (latest models with aluminium housing), it is possible that Sinar eXposure performs unstable. This leads to program crashes or Kernel Panics. This problems affects MacOS 10.5.x (Leopard) as well as 10.6.x (Snow Leopard).
- When downloading images from a Sinarback eMotion 22/54/75-CF card, the images may show artifacts and pixel errors. It is recommended to store images on the Sinarback eMotion's internal memory or shoot tethered until this issue is corrected.
- Images originally captured with Eyelike Capture Pro may show a wrong white balance in Sinar eXposure™.
- Setting the white balance in thumbnails using Sinar eXposure™ on images originally captured with Eyelike Capture Pro may produce a wrong white balance in the image overview.
- The Sinarback eVolution 75 H as well as the Sinarback 54M/MC in combination with the Sinarcam 2 and Fuji GX680 is not supported.
- Images from CaptureShop's .sti RAW data openend in Sinar eXposure can, depending on the used Sinarback / CaptureShop Version, displayed too dark.
The curve which is stored in the CaptureShop image will not transferred correctly when openend in Sinar eXposure
- After launching Sinar eXposure™ 7.0.3 and connecting a Sinarback eVolution 75 H with Sinar p3, Sinar Sliding adapter, and Sinaron Digital CMV lens, the exposure time indicated in the user interface is not properly applied. Instead, the software uses the exposure time of 1 second by default. After changing the exposure time with the respective slider the software uses the correct exposure time for all following shots.
- When using the Sinar eXposure™ 7.0.3 software with Sinarback eVolution 75 H, a Sinar p3 view camera, and Sinar Sliding adapter, the Sinar LC shutter moves in front of the lens when sliding the ground glass into viewing position.
- Using the Sinar LC Shutter with the Sinarback eVolution 75 H and the AUX socket of the Hasselblad V Generic adapter plate 552.36.250 is currently not supported.
- Multishot exposures (4- and 16-shot) in the .sti format (Sinar CaptureShop 5.x) are openend, displayed and exported as 1-shot images.
- The camera adaptation "Hasselblad V", using Sinarback 54 M/MC and Sinarback eVolution 75H in combination with the Adapterkit 552.45.050 supports triggering from the camera only.
- Sinarback 54 M/MC: The quality of the Live Video overview window is not optimized. In order to focus properly, the use of one of the three indicator windows is strongly advised.

9. Removing Sinar eXposure™ from the Hard Disk

If for any reasons Sinar eXposure™ software is required to be completely deleted from the hard disk, the following files have to be removed:

1. In the folder "Applications", the file "**Sinar eXposure**"
2. In the folder "user/Library/Preferences", the files "**Sinar eXposure.sav**" and "**Sinar eXposure layout_LastRun.ini**"
3. In the folder "User/Library/Logs", the file "**Sinar eXposure.log**"
4. In the folder "HD/Library/Application Support", the folder "**Sinar eXposure**"
5. In the folder "HD/Library/Frameworks", the files "**JAPI1394m.framework**" and "**FireCamj.framework**"

Sinar Photography AG, March 2010